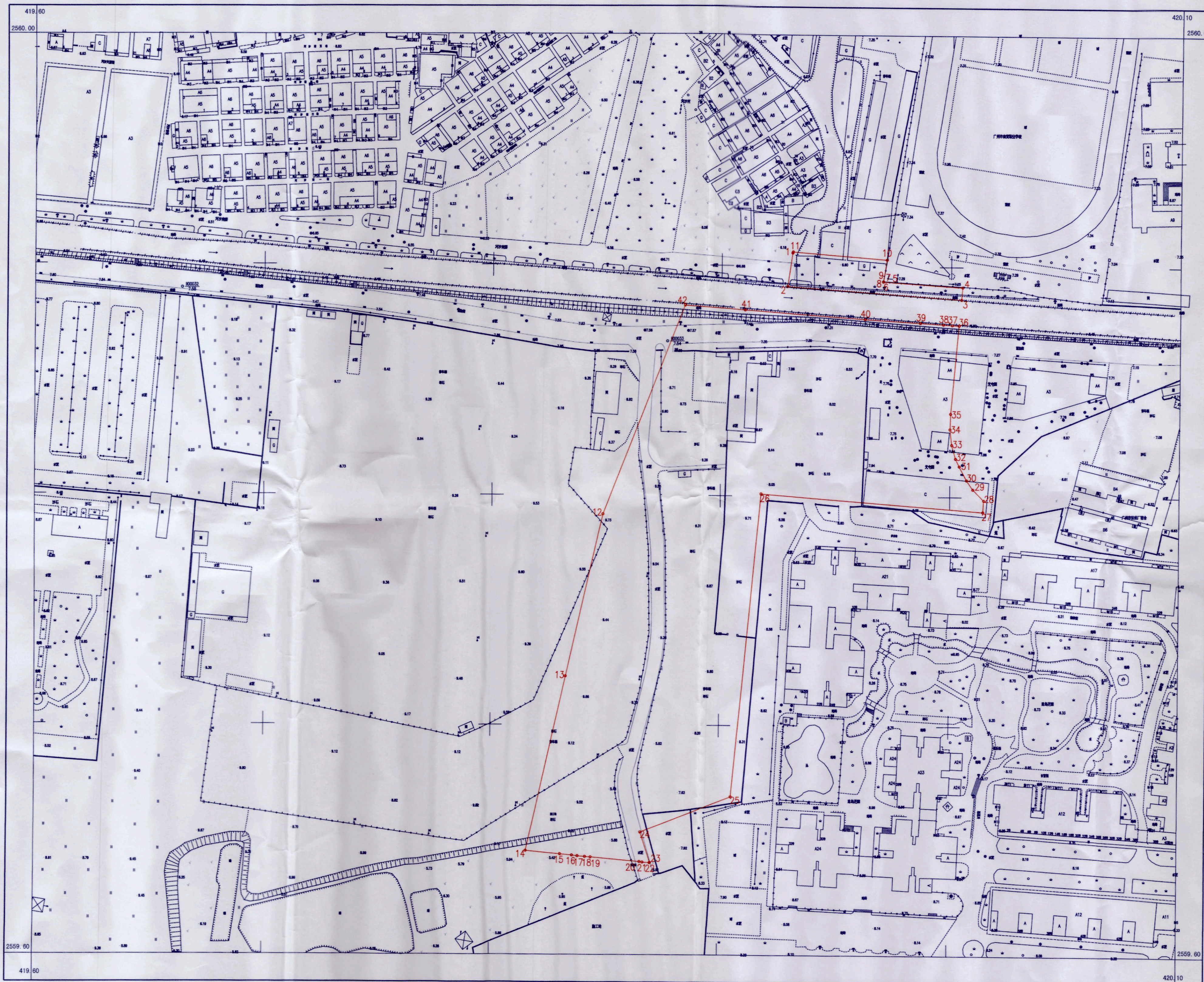


# 征收土地公告附图（集体）



用地方案号: 03013020160001  
案号: 06CH88200522000008

广州2000坐标系		2000国家大地坐标系			
点号	X	Y	点号	X	Y
1	230073.631	33313.693	1	2559905.771	38419930.782
2	230059.056	33311.639	2	2559891.204	38419928.658
3	230054.085	33387.462	3	2559885.866	38420004.462
4	230059.47	33387.912	4	2559891.249	38420004.938
5	230061.566	33353.345	5	2559893.513	38419970.379
6	230061.594	33353.35	6	2559893.541	38419970.383
7	230061.594	33353.345	7	2559893.541	38419970.379
8	230061.646	33353.353	8	2559893.593	38419970.387
9	230061.646	33353.35	9	2559893.593	38419970.384
10	230071.116	33354.845	10	2559903.056	38419971.925
11	230074.111	33313.862	11	2559906.250	38419930.954
12	229959.268	33232.111	12	2559791.794	38419848.641
13	229888.613	33216.704	13	2559721.209	38419832.891
14	229812.512	33200.11	14	2559645.183	38419815.928
15	229811.152	33215.166	15	2559643.750	38419830.978
16	229810.697	33220.364	16	2559643.270	38419836.175
17	229810.423	33222.827	17	2559642.984	38419838.636
18	229810.155	33226.094	18	2559642.700	38419841.902
19	229809.98	33228.567	19	2559642.513	38419844.374
20	229808.109	33249.95	20	2559640.539	38419865.750
21	229807.894	33251.246	21	2559640.317	38419867.045
22	229807.677	33254.356	22	2559640.085	38419870.154
23	229807.735	33254.522	23	2559640.142	38419870.321
24	229820.982	33250.153	24	2559653.412	38419866.015
25	229836.722	33289.494	25	2559668.962	38419905.435
26	229968.75	33301.184	26	2559800.943	38419917.765
27	229961.888	33397.881	27	2559793.613	38420014.436
28	229966.916	33398.22	28	2559798.639	38420014.798
29	229971.676	33393.466	29	2559803.423	38420010.067
30	229975.679	33390.659	30	2559807.439	38420007.279
31	229981.712	33387.41	31	2559813.488	38420004.059
32	229985.037	33385.763	32	2559816.822	38420002.428
33	229990.978	33384.004	33	2559822.772	38420000.698
34	229997.756	33383.178	34	2559829.554	38420000.133
35	230004.499	33383.374	35	2559836.297	38420000.133
36	230042.885	33386.531	36	2559874.670	38420003.476
37	230043.01	33383.559	37	2559874.809	38420000.505
38	230043.229	33379.664	38	2559875.047	38419996.611
39	230043.827	33369.689	39	2559875.693	38419986.638
40	230045.159	33345.549	40	2559877.142	38419962.503
41	230048.606	33293.253	41	2559880.843	38419910.220
42	230050.335	33266.922	42	2559882.699	38419883.895

面积: 23220.03平方米

注: 红线范围是根据我院测字: 06CH88200304000003号  
案结合用地申请单位要求确定。



广州市房地产测绘院  
2020年5月27日

广州市房地产测绘院

2000国家大地坐标系  
广州市城建高程系

1:1000