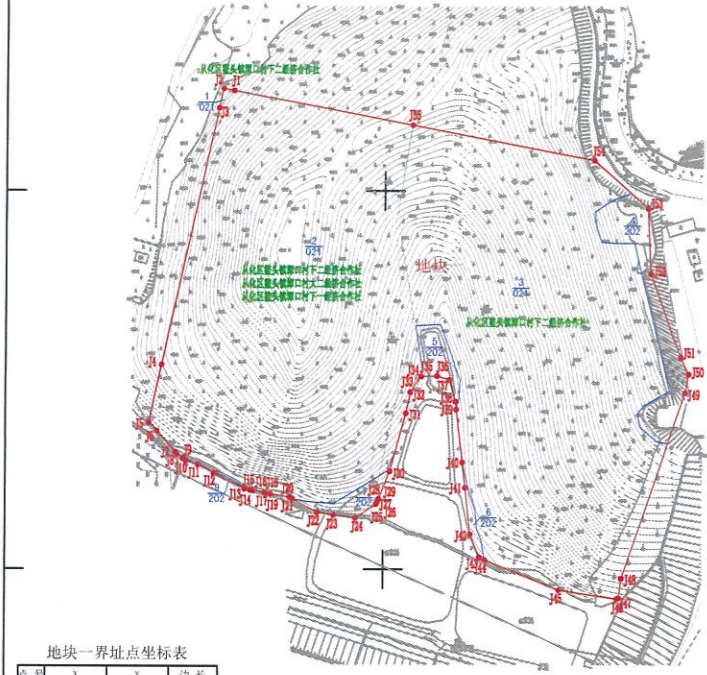


广州市规划和自然资源局从化区分局征地勘测定界图  
2615.8-448.8

案号: 20190903

448.8  
2616.8

450.0  
2616.8

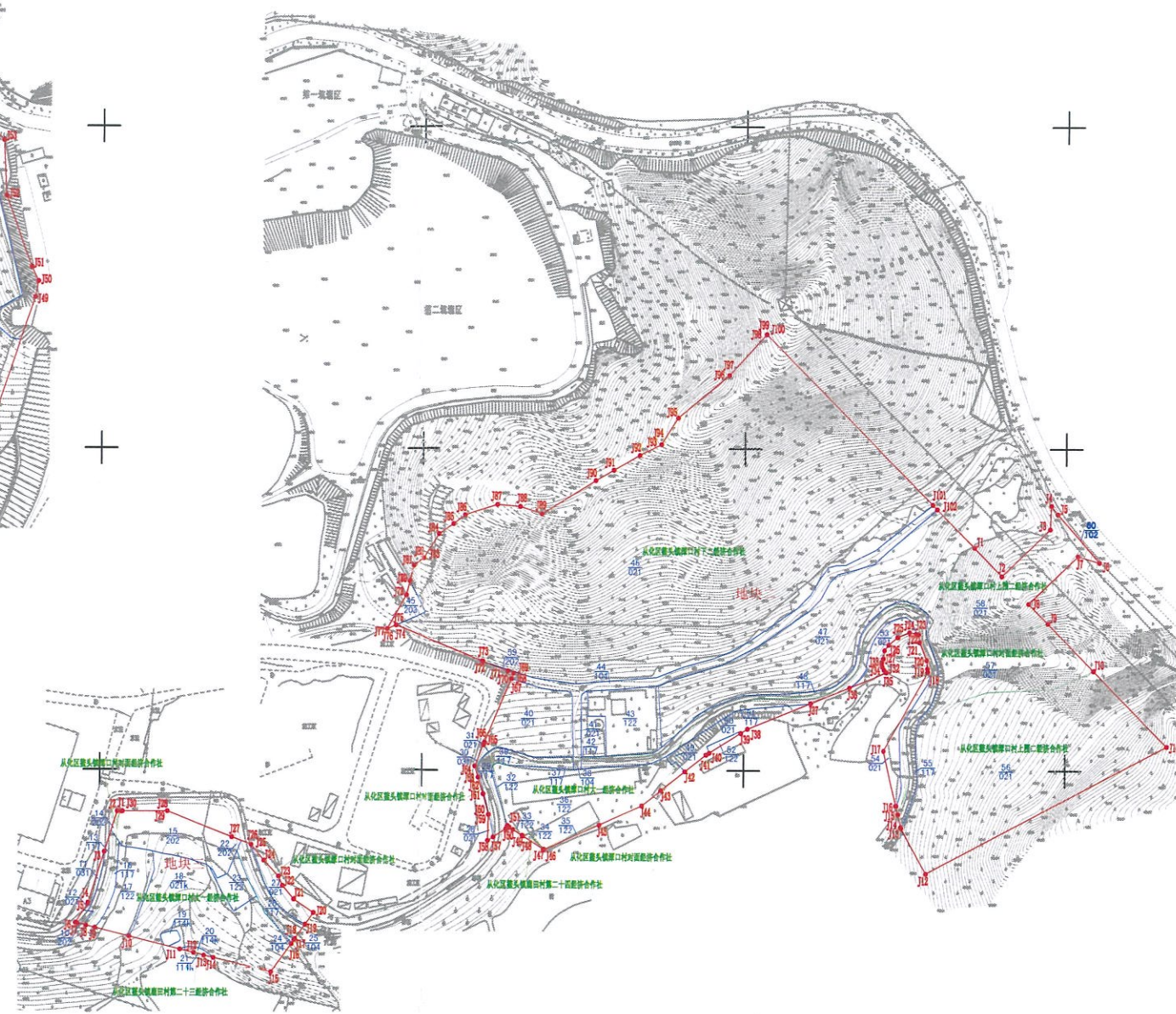


地块一界址点坐标表

点号	X	Y	边长
J1	261662.936	448919.431	5.80
J2	261663.030	448913.738	10.50
J3	261663.767	448911.512	138.94
J4	261658.012	448882.068	34.13
J5	261647.589	448875.470	6.29
J6	261647.986	448879.755	14.70
J7	261648.844	448893.344	1.53
J8	261646.671	448890.354	3.28
J9	261648.610	448893.162	2.08
J10	261647.381	448894.837	6.81
J11	261645.271	448901.336	9.57
J12	261645.877	448900.814	18.32
J13	261642.462	448926.090	2.94
J14	261641.910	448928.981	0.32
J15	261642.117	448928.230	1.40
J16	261641.613	448930.529	6.19
J17	261640.421	448936.621	0.59
J18	261640.262	448937.181	2.73
J19	261639.800	448939.871	10.36
J20	261638.080	448949.887	1.73
J21	261627.230	448951.307	14.88
J22	261626.001	448964.395	8.97
J23	261628.548	448973.251	11.60
J24	261627.161	448984.765	13.17
J25	261634.433	448995.703	0.72
J26	261643.081	448996.016	1.29
J27	261636.262	448996.510	0.89
J28	261636.771	448996.834	0.38
J29	261641.112	448999.000	15.83
J30	261641.826	449002.891	31.70
J31	261642.483	449011.207	11.41
J32	261643.657	449013.501	9.94
J33	261650.966	449018.951	0.00
J34	261650.975	449018.958	0.27
J35	261650.984	449019.228	8.34
J36	261650.262	449027.961	6.89
J37	261650.258	449034.157	11.89
J38	261648.796	449037.311	4.21
J39	261648.618	449037.811	28.25
J40	261646.361	449041.166	13.42
J41	261643.241	449042.760	24.81
J42	261648.403	449045.628	13.31
J43	261646.191	449050.823	2.94
J44	261642.088	449052.232	42.29
J45	261639.220	449052.602	30.68
J46	261636.521	449122.790	1.08
J47	261636.944	449123.778	10.52
J48	261636.379	449125.139	103.45
J49	261635.379	449138.239	10.18
J50	261633.380	449150.140	10.00
J51	261631.379	449155.789	66.89
J52	261636.379	449139.859	34.47
J53	261639.000	449138.173	38.17
J54	261616.382	449139.666	97.42
J55	261634.765	449139.994	96.29
J1	261662.936	448919.431	50811.4 平方米 合 76.2171 亩
J1	2616174.066	449213.716	50983.2 平方米 合 76.7779 亩

地块三界址点坐标表

点号	X	Y	边长
J1	2616174.066	449213.716	2.55
J2	2616174.066	449211.141	26.41
J3	261618.828	449200.280	33.18
J4	261611.137	449193.300	0.71
J5	261616.448	449193.149	14.01
J6	261610.676	449185.510	1.30
J7	261610.206	449186.813	8.37
J8	2616103.002	449192.051	8.77
J9	2616101.002	449197.649	21.92
J10	2616096.279	449218.916	32.82
J11	2616088.310	449250.780	8.91
J12	2616086.145	449259.657	1.60
J13	2616080.642	449255.813	6.05
J14	2616083.073	449271.682	36.74
J15	2616074.183	449287.323	21.53
J16	2616099.750	449319.721	2.85
J17	2616094.078	449321.361	0.81
J18	2616099.727	449321.820	11.05
J19	2616102.756	449328.192	8.80
J20	2616100.972	449330.231	14.87
J21	2616118.419	449329.999	10.94
J22	2616127.878	449341.062	6.23
J23	2616133.728	449341.651	13.37
J24	2616143.541	449352.571	12.70
J25	2616153.426	449354.660	0.04
J26	2616153.467	449354.996	12.74
J27	2616158.155	449362.747	42.25
J28	2616174.101	449342.430	0.04
J29	2616174.066	449342.430	28.11
J30	2616174.066	449341.323	0.61



用地红线土地面积为138005.0平方米  
80683平方米是从化区鳌头镇潭口村下二经济合作社集体土地;  
8766平方米是从化区鳌头镇潭口村对面经济合作社集体土地;  
11844平方米是从化区鳌头镇潭口村六一经济合作社集体土地;  
2平方米是从化区鳌头镇潭口村第二十三经济合作社集体土地;  
40平方米是从化区鳌头镇潭口村第二十四经济合作社集体土地;  
14861平方米是从化区鳌头镇潭口村上二经济合作社集体土地;  
20789平方米是从化区鳌头镇潭口村下二经济合作社、从化区鳌头镇潭口村大二经济合作社、从化区鳌头镇潭口村下一经济合作社集体土地;

地块二界址点坐标表

点号	X	Y	边长
J1	261638.823	449741.089	24.87
J2	261621.203	449768.619	41.72
J3	261630.287	449790.630	15.70
J4	261636.873	449791.162	4.72
J5	261639.662	449793.273	39.47
J6	261639.728	449821.157	13.91
J7	261633.000	449857.797	12.36
J8	261630.991	449777.318	17.15
J9	261629.696	449789.351	65.88
J10	261620.382	449817.801	65.40
J11	2616215.494	449803.280	168.89
J12	2616136.233	449714.251	32.35
J13	261644.561	449698.642	0.51
J14	261645.696	449698.529	8.23
J15	2616473.085	449696.699	8.40
J16	2616478.330	449695.388	35.09
J17	2616421.503	449687.699	2.20
J18	2616261.600	449714.933	6.30
J19	2616283.791	449714.738	11.94
J20	2616298.639	449714.161	4.86
J21	2616280.173	449709.823	1.61
J22	2616281.900	449709.179	4.25
J23	2616282.210	449707.482	7.81
J24	2616286.152	449705.411	7.21
J25	2616283.197	449696.176	4.40
J26	2616278.498	449693.780	5.06
J27	2616275.016	449688.018	0.42
J28	2616269.990	449687.952	2.12
J29	2616269.702	449687.103	1.21
J30	2616267.742	449686.253	1.81
J31	2616266.612	449686.182	2.13
J32	2616262.612	449687.703	1.49
J33	2616261.742	449688.583	25.23
J34	2616261.256	449689.288	37.76
J35	2616251.153	449685.906	42.22
J36	2616241.928	449641.831	4.83
J37	2616235.976	449602.742	23.11
J38	2616223.348	449598.571	16.13
J39	2616211.630	449579.021	0.65
J40	2616209.811	449577.134	10.78
J41	2616198.444	449564.211	20.20
J42	2616187.472	449519.580	37.76
J43	2616178.640	449537.407	0.49
J44	2616166.117	449510.948	14.98
J45	2616150.703	449476.482	0.43
J46	2616140.406	449476.003	6.77
J47	2616130.180	449463.526	2.79
J48	2616130.442	449463.511	1.32
J49	2616130.120	449477.329	1.82
J50	2616130.618	449451.989	1.52
J51	2616130.281	449451.096	1.63
J52	2616130.103	449451.411	0.88
J53	2616130.677	449453.475	0.39
J54	2616130.621	449453.353	9.39
J55	2616130.583	449453.281	3.68
J56	2616130.497	449445.618	16.13
J57	2616130.297	449442.301	0.65
J58	2616130.420	449442.075	13.24
J59	2616130.320	449439.365	10.78
J60	2616130.589	449436.191	7.19
J61	2616130.646	449436.180	14.19
J62	2616130.517	449434.060	1.72
J63	2616130.681	449439.354	12.70
J64	2616130.277	449439.906	3.61
J65	2616130.890	449435.931	0.02
J66	2616130.240	449437.279	16.24
J67	2616130.247	449437.261	3.70
J68	2616130.291	449437.279	0.98
J69	2616130.668	449435.843	59.25
J70	2616130.722	449438.777	0.88
J71	2616130.938	449438.238	0.96
J72	2616130.061	449433.271	0.06
J73	2616130.055	449433.215	5.86
J74	2616130.687	449437.710	0.20
J75	2616130.721	449437.573	21.18
J76	2616130.731	449439.557	9.13
J77	2616130.599	449439.790	0.67
J78	2616130.671	449439.778	10.11
J79	2616130.480	449439.216	8.10
J80	2616130.973	449440.908	17.71
J81	2616130.983	449440.967	11.03
J82	2616130.978	449440.433	9.25
J83	2616130.223	449439.519	31.60
J84	2616130.723	449436.988	13.81
J85	2616130.223	449436.808	14.65
J86	2616130.973	449436.708	20.51
J87	2616130.475	449434.819	12.13
J88	2616130.223	449430.629	18.72
J89	2616130.723	449430.919	13.01
J90	2616130.973	449433.329	8.01
J91	2616130.723	449438.739	19.30
J92	2616130.723	449438.739	31.37
J93	2616130.723	449438.739	0.61
J94	2616130.723	449438.739	0.61
J95	2616130.723	449438.739	0.61
J96	2616130.723	449438.739	0.61
J97	2616130.723	449438.739	0.61
J98	2616130.723	449438.739	0.61
J99	2616130.723	449438.739	0.61
J100	2616130.723	449438.739	0.61
J101	2616130.723	449438.739	0.61
J102	2616130.723	449438.739	0.61
J103	2616130.723	449438.739	0.61
J104	2616130.723	449438.739	0.61

广州市从化区国土规划测绘队

2019年7月数字化制。  
2000国家大地坐标系。  
1985国家高程基准,等高距:1米。  
2017年7月

1:2000

K: 墨卡托  
X: 米  
Y: 米

448.8

450.0