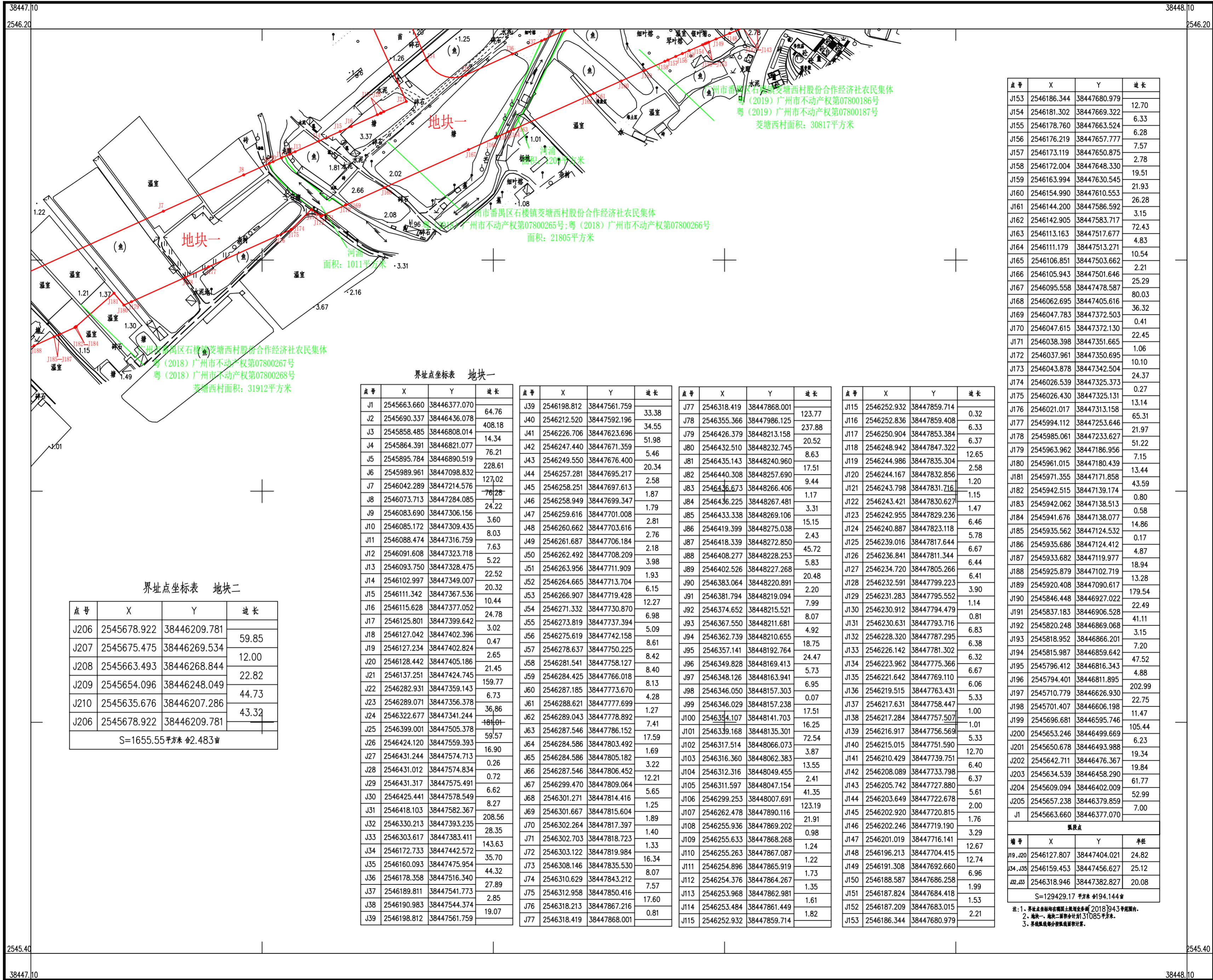


2020年4月数字化测图。
2000国家大地坐标。
1985国家高程基准，等高距1米。
2017年版图式。

广州市番禺区土地开发中心用地权属调查图-2
化龙镇HL17G-01京珠高速东侧地块(一期C地块)
2545.40-38447.10

案号:391644438
用地方案号:13104020180007



界址点坐标表 地块一

点号	X	Y	边长
J1	2545663.660	38446377.070	64.76
J2	2545690.337	38446436.078	408.18
J3	2545858.485	38446808.014	14.34
J4	2545864.391	38446821.077	76.21
J5	2545895.784	38446890.519	228.61
J6	2545989.961	38447098.832	127.02
J7	2546042.289	38447214.576	76.28
J8	2546073.713	38447284.085	24.22
J9	2546083.690	38447306.156	3.60
J10	2546085.172	38447309.435	8.03
J11	2546088.474	38447316.759	7.63
J12	2546091.608	38447323.718	5.22
J13	2546093.750	38447328.475	22.52
J14	2546102.997	38447349.007	20.32
J15	2546111.342	38447367.536	10.44
J16	2546115.828	38447377.052	24.78
J17	2546125.801	38447399.642	3.02
J18	2546127.042	38447402.396	0.47
J19	2546127.234	38447402.824	2.65
J20	2546128.442	38447405.186	21.45
J21	2546137.251	38447424.745	159.77
J22	2546282.931	38447359.143	6.73
J23	2546289.071	38447356.378	36.86
J24	2546322.677	38447341.244	104.01
J25	2546399.001	38447505.378	59.57
J26	2546424.120	38447559.393	16.90
J27	2546431.244	38447574.713	0.26
J28	2546431.012	38447574.834	0.72
J29	2546431.317	38447575.491	6.62
J30	2546425.441	38447578.549	8.27
J31	2546418.103	38447582.367	208.56
J32	2546330.213	38447393.235	28.35
J33	2546303.617	38447383.411	143.63
J34	2546172.733	38447442.572	35.70
J35	2546160.093	38447475.954	44.32
J36	2546178.358	38447516.340	27.89
J37	2546189.811	38447541.773	2.85
J38	2546190.983	38447544.374	19.07
J39	2546198.812	38447561.759	

界址点坐标表 地块二

点号	X	Y	边长
J206	2545678.922	38446209.781	59.85
J207	2545675.475	38446269.534	12.00
J208	2545663.493	38446268.844	22.82
J209	2545654.096	38446248.049	44.73
J210	2545635.676	38446207.286	43.32
J206	2545678.922	38446209.781	

S=1655.55平方米 合2.483亩

点号	X	Y	边长
J39	2546198.812	38447561.759	33.38
J40	2546212.520	38447592.196	34.55
J41	2546226.706	38447623.696	51.98
J42	2546247.440	38447671.359	5.46
J43	2546249.550	38447676.400	20.34
J44	2546257.281	38447695.217	2.58
J45	2546258.251	38447697.613	1.87
J46	2546258.949	38447699.347	1.79
J47	2546259.616	38447701.008	2.81
J48	2546260.662	38447703.616	2.76
J49	2546261.687	38447706.184	2.18
J50	2546262.492	38447708.209	3.98
J51	2546263.956	38447711.909	1.93
J52	2546264.665	38447713.704	6.15
J53	2546266.907	38447719.428	12.27
J54	2546271.332	38447730.874	6.98
J55	2546273.819	38447737.394	5.09
J56	2546275.619	38447742.158	8.61
J57	2546278.637	38447750.225	8.42
J58	2546281.541	38447758.127	8.40
J59	2546284.425	38447766.018	8.13
J60	2546287.185	38447773.670	4.28
J61	2546288.621	38447777.699	1.27
J62	2546289.043	38447778.892	7.41
J63	2546287.546	38447786.152	17.59
J64	2546284.586	38447803.492	1.69
J65	2546284.586	38447805.182	3.22
J66	2546287.546	38447806.452	12.21
J67	2546299.470	38447809.064	5.65
J68	2546301.271	38447814.616	1.25
J69	2546301.667	38447815.604	1.89
J70	2546302.264	38447817.397	1.40
J71	2546302.703	38447818.723	1.33
J72	2546303.122	38447819.984	16.34
J73	2546308.146	38447835.530	8.07
J74	2546310.629	38447843.212	7.57
J75	2546312.958	38447850.416	17.60
J76	2546318.213	38447867.216	0.81
J77	2546318.419	38447868.001	

点号	X	Y	边长
J77	2546318.419	38447868.001	123.77
J78	2546355.366	38447986.125	237.88
J79	2546426.379	38448213.158	20.52
J80	2546432.510	38448232.745	8.63
J81	2546435.143	38448240.960	17.51
J82	2546440.308	38448257.690	9.44
J83	2546436.673	38448266.406	1.17
J84	2546436.225	38448267.481	3.31
J85	2546433.338	38448269.106	15.15
J86	2546439.399	38448275.038	2.43
J87	2546418.339	38448272.850	45.72
J88	2546408.277	38448228.253	5.83
J89	2546402.526	38448227.268	20.48
J90	2546383.064	38448220.891	2.20
J91	2546381.794	38448219.094	7.99
J92	2546374.652	38448215.521	8.07
J93	2546367.550	38448211.681	4.92
J94	2546362.739	38448210.655	18.75
J95	2546357.141	38448192.764	24.47
J96	2546349.828	38448169.413	5.73
J97	2546348.126	38448163.941	6.95
J98	2546346.050	38448157.303	0.07
J99	2546346.029	38448157.238	17.51
J100	2546334.107	38448141.703	16.25
J101	2546339.168	38448135.301	72.54
J102	2546317.514	38448066.073	3.87
J103	2546316.360	38448062.383	13.55
J104	2546312.316	38448049.455	2.41
J105	2546311.597	38448047.154	41.35
J106	2546299.253	38448007.691	123.19
J107	2546262.478	38447890.116	21.91
J108	2546255.936	38447869.202	0.98
J109	2546255.633	38447868.268	1.24
J110	2546255.263	38447867.087	1.22
J111	2546254.896	38447865.919	1.73
J112	2546254.376	38447864.267	1.35
J113	2546253.968	38447862.981	1.61
J114	2546253.484	38447861.449	1.82
J115	2546252.932	38447859.714	

点号	X	Y	边长
J115	2546252.932	38447859.714	0.32
J116	2546252.836	38447859.408	6.33
J117	2546250.904	38447853.384	6.37
J118	2546248.942	38447847.322	12.65
J119	2546244.986	38447835.304	2.58
J120	2546244.167	38447832.856	1.20
J121	2546243.798	38447831.716	1.15
J122	2546243.421	38447830.627	1.47
J123	2546242.955	38447829.236	6.46
J124	2546240.887	38447823.118	5.78
J125	2546239.016	38447817.644	6.67
J126	2546236.841	38447811.344	6.44
J127	2546234.720	38447805.266	6.41
J128	2546232.591	38447799.223	3.90
J129	2546231.283	38447795.552	1.14
J130	2546230.912	38447794.479	0.81
J131	2546230.631	38447793.716	6.83
J132	2546228.320	38447787.295	6.38
J133	2546226.142	38447781.302	6.32
J134	2546223.962	38447775.366	6.67
J135	2546221.642	38447769.111	6.06
J136	2546219.515	38447763.431	5.33
J137	2546217.631	38447758.447	1.00
J138	2546217.284	38447757.507	1.01
J139	2546216.917	38447756.569	5.33
J140	2546215.015	38447751.590	12.70
J141	2546210.429	38447739.751	6.40
J142	2546208.089	38447733.798	6.37
J143	2546205.742	38447727.880	5.61
J144	2546203.649	38447722.678	2.00
J145	2546202.920	38447720.815	1.76
J146	2546202.246	38447719.190	3.29
J147	2546201.019	38447716.141	12.67
J148	2546196.213	38447704.415	12.74
J149	2546191.308	38447692.660	6.96
J150	2546188.587	38447686.258	1.99
J151	2546187.824	38447684.418	1.53
J152	2546187.209	38447683.015	2.21
J153	2546186.344	38447680.979	

点号	X	Y	边长
J153	2546186.344	38447680.979	12.70
J154	2546181.302	38447669.322	6.33
J155	2546178.760	38447663.524	6.28
J156	2546176.219	38447657.777	7.57
J157	2546173.119	38447650.875	2.78
J158	2546172.004	38447648.330	19.51
J159	2546163.994	38447630.545	21.93
J160	2546154.990	38447610.553	26.28
J161	2546144.200	38447586.592	3.15
J162	2546142.905	38447583.717	72.43
J163	2546113.163	38447517.677	4.83
J164	2546111.179	38447513.271	10.54
J165	2546106.851	38447503.662	2.21
J166	2546105.943	38447501.646	25.29
J167	2546095.558	38447478.587	80.03
J168	2546062.695	38447405.616	36.32
J169	2546047.783	38447372.503	0.41
J170	2546047.615	38447372.130	22.45
J171	2546038.398	38447351.665	1.06
J172	2546037.961	38447350.695	10.10
J173	2546043.878	38447342.504	24.37
J174	2546026.539	38447325.373	0.27
J175	2546026.430	38447325.131	13.14
J176	2546021.017	38447313.158	65.31
J177	2545994.112	38447253.646	21.97
J178	2545985.061	38447233.627	51.22
J179	2545963.962	38447186.956	7.15
J180	2545961.015	38447180.439	13.44
J181	2545971.355	38447171.858	43.59
J182	2545942.515	38447139.174	0.80
J183	2545942.062	38447138.513	0.58
J184	2545941.676	38447138.077	14.86
J185	2545935.562	38447124.532	0.17
J186	2545935.686	38447124.412	4.87
J187	2545933.682	38447119.977	18.94
J188	2545925.879	38447102.719	13.28
J189	2545920.408	38447090.617	179.54
J190	2545846.448	38446927.022	22.49
J191	2545837.183	38446906.528	41.11
J192	2545820.248	38446869.068	3.15
J193	2545818.952	38446866.201	7.20
J194	2545815.987	38446859.642	47.52
J195	2545796.412	38446816.343	4.88
J196	2545794.401	38446811.895	202.99
J197	2545710.779	38446626.930	22.75
J198	2545701.407</		