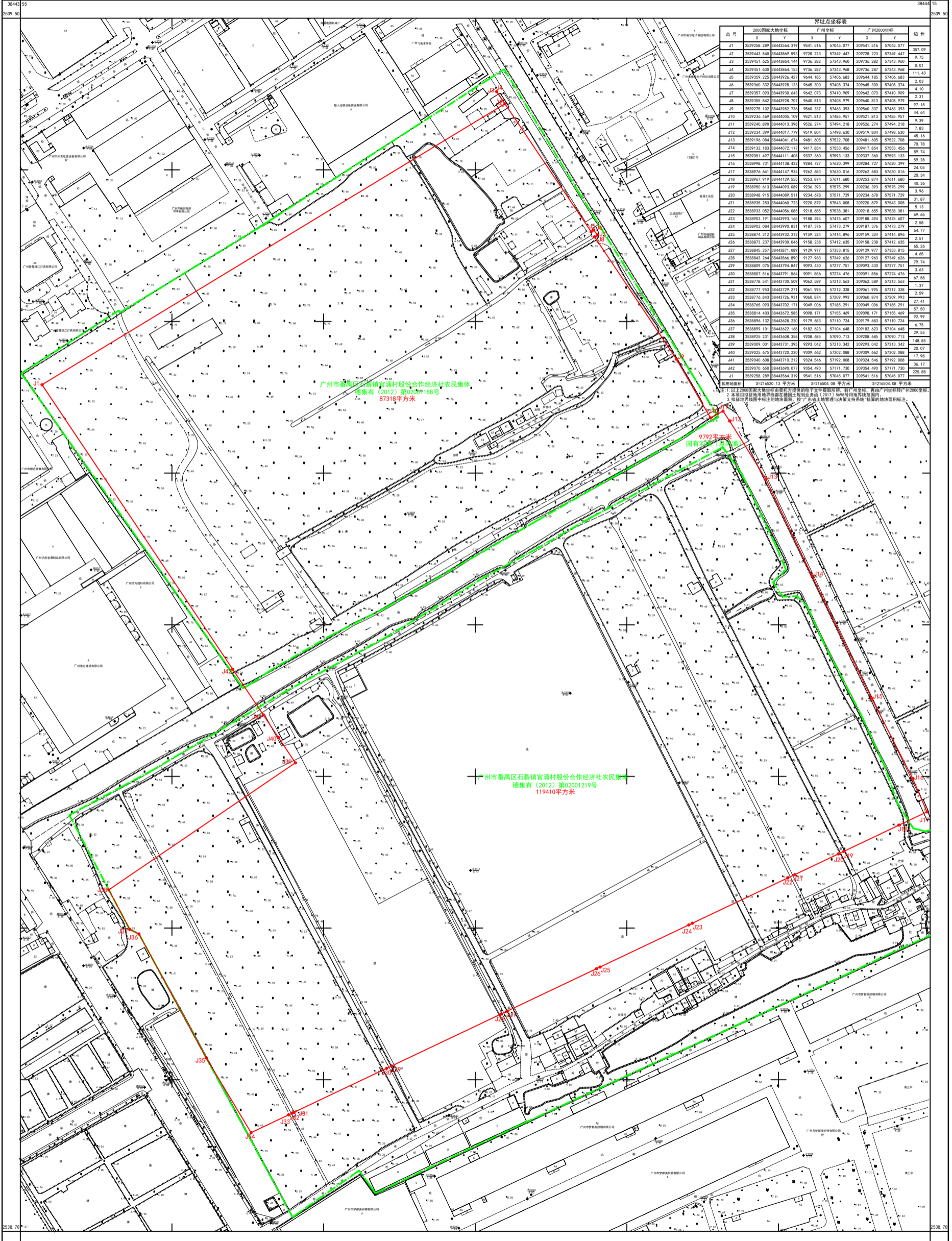


2019年12月数字化测图  
2000国家大地坐标系  
广州市高程系统  
DBJ440100/T 230-2015年版图式

# 广州市番禺區土地开发中心权属调查图

石碁镇SQ17G-01海涌路东侧地块(A地块)  
2538.70-38443.55

工 程 编 号 : 2019±42A128  
用 地 方 案 号 : 2019KJ01130076



点号	2000国家大地坐标			广州2000坐标			备注
	X	Y	Z	X	Y	Z	
J1	2539258.289	38443564.319	9641.516	57045.077	209541.516	57045.077	253.021
J2	2539443.540	38443869.593	9728.223	57349.447	209728.223	57349.447	9.75
J3	2539451.625	38443864.144	9736.282	57343.960	209736.282	57343.960	5.01
J4	2539451.630	38443864.153	9736.287	57343.968	209736.287	57343.968	111.43
J5	2539599.225	38443926.427	9646.185	57626.683	209844.185	57626.683	4.03
J6	2539565.322	38443928.122	9645.200	57628.232	209845.300	57628.232	57408.374
J7	2539597.093	38443935.543	9642.073	57619.909	209842.073	57619.909	4.10
J8	2539555.842	38443928.703	9640.813	57628.979	209840.813	57628.979	2.31
J9	2539275.102	38443982.734	9560.337	57463.393	209560.337	57463.393	44.64
J10	2539235.469	38444005.109	9521.813	57485.951	209521.813	57485.951	1.39
J11	2539240.890	38444013.398	9526.274	57494.218	209526.274	57494.218	1.82
J12	2539234.399	38444017.779	9519.804	57498.630	209519.804	57498.630	45.15
J13	2539196.084	38444041.674	9481.605	57522.708	209481.605	57522.708	25.78
J14	2539132.183	38444072.117	9417.854	57553.456	209417.854	57553.456	89.74
J15	2539051.497	38444111.458	9337.360	57593.133	209337.360	57593.133	59.28
J16	2538998.721	38444138.422	9284.727	57626.389	209284.727	57626.389	24.05
J17	2538976.441	38444147.924	9252.483	57620.016	209252.483	57620.016	20.34
J18	2538967.919	38444139.555	9253.874	57611.680	209253.874	57611.680	40.36
J19	2538950.413	38444093.089	9236.393	57575.299	209236.393	57575.299	3.96
J20	2538948.915	38444089.511	9234.879	57571.729	209234.879	57571.729	31.89
J21	2538935.253	38444050.723	9220.879	57543.008	209220.879	57543.008	4.13
J22	2538933.052	38444055.082	9218.655	57538.381	209218.655	57538.381	69.65
J23	2538903.191	38443993.165	9188.494	57473.607	209188.494	57473.607	5.58
J24	2538902.084	38443996.831	9187.376	57473.279	209187.376	57473.279	64.77
J25	2538874.312	38443932.317	9159.324	57414.896	209159.324	57414.896	4.51
J26	2538873.337	38443928.044	9158.288	57412.638	209158.288	57412.638	65.26
J27	2538845.227	38443871.089	9129.877	57353.813	209129.877	57353.813	4.65
J28	2538843.264	38443866.895	9127.963	57349.630	209127.963	57349.630	72.74
J29	2538809.875	38443794.843	9093.430	57277.751	209093.430	57277.751	1.63
J30	2538807.516	38443791.564	9091.856	57274.476	209091.856	57274.476	67.58
J31	2538778.541	38443729.509	9062.989	57213.563	209062.989	57213.563	1.37
J32	2538777.953	38443729.271	9061.995	57212.328	209061.995	57212.328	27.49
J33	2538776.843	38443726.931	9060.874	57209.993	209060.874	57209.993	27.41
J34	2538765.093	38443702.171	9049.006	57185.291	209049.006	57185.291	82.50
J35	2538814.403	38443672.580	9098.171	57155.469	209098.171	57155.469	82.99
J36	2538896.123	38443623.222	9179.483	57110.721	209179.483	57110.721	4.75
J37	2538899.101	38443622.144	9182.422	57104.648	209182.422	57104.648	77.55
J38	2538925.231	38443608.324	9208.485	57090.713	209208.485	57090.713	148.85
J39	2539009.001	38443731.393	9293.042	57213.342	209293.042	57213.342	20.07
J40	2539025.675	38443720.220	9309.462	57202.088	209299.462	57202.088	17.98
J41	2539040.608	38443710.212	9324.546	57192.008	209304.546	57192.008	30.17
J42	2539070.450	38443690.077	9354.490	57171.730	209354.490	57171.730	225.85
J1	2539258.289	38443564.319	9641.516	57045.077	209541.516	57045.077	

界址点坐标表  
注: 1. 以上界址点坐标为测区范围内所有界址点的坐标, 本图所附界址点坐标表为2000坐标系。  
2. 本图所附界址点坐标表在测区范围内有效, 测区范围以外的界址点坐标不在本图范围内。  
3. 本图所附界址点坐标表在测区范围内有效, 测区范围以外的界址点坐标不在本图范围内。

生产单位: 广州市城市规划勘测设计研究院  
审核单位: 广州全成多维信息技术有限公司