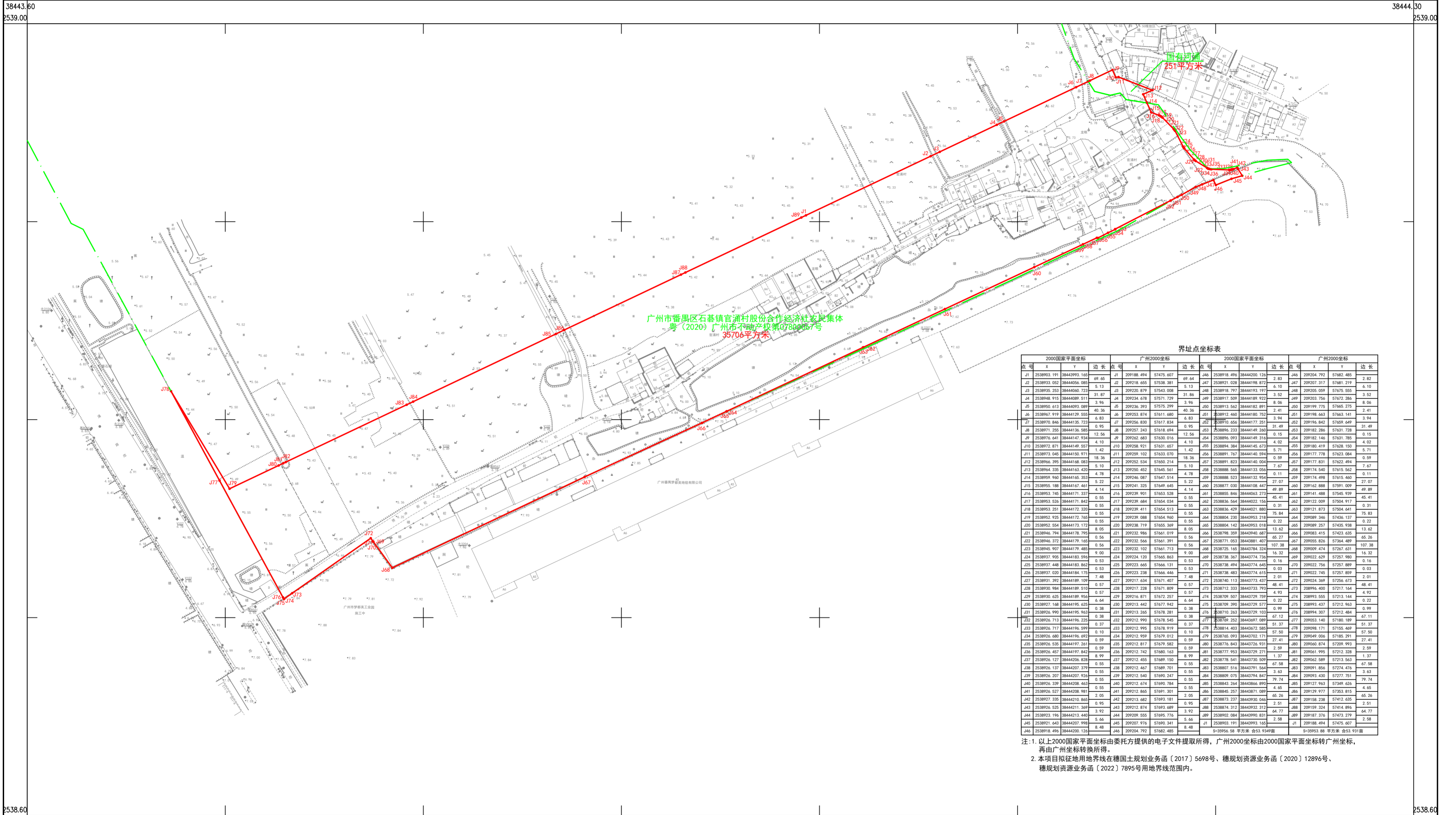


2022年2月数字化测图  
2000国家平面坐标系  
广州市高程系统  
DBJ440100/T 230-2015年版图式

### 广州市番禺区土地开发中心权属调查图 石碁镇SQ21G-02梦都美北侧地块三 F49G026088

工程编号: 2022土42B120  
用地方案号: 2022KJ01130047



界址点坐标表

2000国家平面坐标				广州2000坐标				2000国家平面坐标				广州2000坐标			
点号	X	Y	边长	点号	X	Y	边长	点号	X	Y	边长	点号	X	Y	边长
J1	253893.191	3844399.140	69.65	J1	209188.494	57475.607	69.64	J46	2538918.496	38444200.120	2.83	J46	209204.792	57682.485	2.82
J2	2538933.052	38444056.085	5.13	J2	209218.655	57538.381	5.13	J47	2538921.028	38444198.872	6.10	J47	209207.317	57681.219	6.10
J3	2538935.251	38444060.723	31.87	J3	209220.879	57543.008	31.86	J48	2538918.797	38444193.197	3.52	J48	209205.059	57675.555	3.52
J4	2538948.915	38444069.511	3.96	J4	209234.078	57571.729	3.96	J49	2538917.509	38444189.922	8.06	J49	209203.756	57672.286	8.06
J5	2538950.613	38444093.089	40.36	J5	209236.393	57575.299	40.36	J50	2538913.562	38444182.891	2.41	J50	209199.775	57665.275	2.41
J6	2538967.919	38444129.555	6.83	J6	209253.874	57611.680	6.83	J51	2538912.460	38444180.752	3.94	J51	209198.663	57663.141	3.94
J7	2538970.846	38444135.723	0.95	J7	209256.830	57617.834	0.95	J52	2538910.656	38444177.251	31.49	J52	209196.842	57659.649	31.49
J8	2538971.255	38444136.585	12.56	J8	209257.243	57618.694	12.56	J53	2538896.233	38444169.260	0.15	J53	209192.286	57631.728	0.15
J9	2538976.641	38444147.934	4.10	J9	209262.683	57630.016	4.10	J54	2538896.093	38444167.310	4.02	J54	209192.146	57631.785	4.02
J10	2538972.871	38444149.527	1.42	J10	209258.921	57631.657	1.42	J55	2538894.384	38444165.671	5.71	J55	209190.419	57628.150	5.71
J11	2538973.045	38444150.971	18.36	J11	209259.102	57633.070	18.36	J56	2538891.767	38444160.994	0.59	J56	209177.778	57623.084	0.59
J12	2538966.395	38444158.083	5.10	J12	209252.534	57650.214	5.10	J57	2538891.623	38444160.000	7.67	J57	209177.831	57622.494	7.67
J13	2538964.325	38444161.420	4.78	J13	209250.452	57645.561	4.78	J58	2538888.565	38444158.050	0.11	J58	209174.540	57615.560	0.11
J14	2538959.940	38444165.353	4.78	J14	209246.087	57647.514	4.78	J59	2538888.523	38444157.950	27.07	J59	209174.498	57615.560	27.07
J15	2538955.188	38444167.461	5.22	J15	209241.325	57649.445	5.22	J60	2538877.030	38444158.447	49.89	J60	209162.888	57591.009	49.89
J16	2538953.740	38444171.237	4.14	J16	209239.901	57643.528	4.14	J61	2538855.844	38444093.271	49.89	J61	209161.488	57585.939	49.89
J17	2538953.526	38444171.842	0.55	J17	209239.484	57654.034	0.55	J62	2538836.544	38444022.154	45.41	J62	209122.009	57554.917	45.41
J18	2538953.251	38444172.320	0.55	J18	209239.411	57654.513	0.55	J63	2538836.429	38444021.880	0.31	J63	209121.873	57554.941	0.31
J19	2538953.925	38444172.760	0.55	J19	209239.088	57654.960	0.55	J64	2538804.230	38443953.218	75.84	J64	209089.346	57436.137	75.84
J20	2538952.554	38444173.172	0.55	J20	209238.719	57655.369	0.55	J65	2538804.142	38443953.018	0.22	J65	209089.257	57435.938	0.22
J21	2538946.794	38444178.795	8.05	J21	209232.986	57661.019	8.05	J66	2538798.359	38443940.687	13.62	J66	209083.415	57423.035	13.62
J22	2538946.372	38444179.165	0.56	J22	209232.566	57661.391	0.56	J67	2538771.053	38443881.407	107.38	J67	209056.836	57364.489	107.38
J23	2538945.907	38444179.480	0.56	J23	209232.102	57661.713	0.56	J68	2538725.165	38443784.324	16.32	J68	209009.414	57267.631	16.32
J24	2538937.905	38444183.594	9.00	J24	209224.120	57665.863	9.00	J69	2538738.367	38443774.734	0.16	J69	209022.629	57257.980	0.16
J25	2538937.448	38444183.860	0.53	J25	209223.665	57666.131	0.53	J70	2538738.494	38443774.645	0.63	J70	209022.756	57257.889	0.63
J26	2538937.020	38444184.175	0.53	J26	209223.238	57666.446	0.53	J71	2538738.483	38443774.615	2.01	J71	209022.745	57257.889	2.01
J27	2538931.392	38444189.109	7.48	J27	209217.634	57671.407	7.48	J72	2538740.113	38443773.437	48.41	J72	209024.369	57256.673	48.41
J28	2538930.984	38444189.510	0.57	J28	209217.228	57671.809	0.57	J73	2538712.333	38443773.793	4.93	J73	209019.400	57213.144	4.93
J29	2538926.625	38444189.954	6.54	J29	209216.871	57672.257	6.54	J74	2538709.507	38443729.759	0.22	J74	208993.555	57213.144	0.22
J30	2538927.168	38444189.625	0.38	J30	209213.442	57677.942	0.38	J75	2538709.390	38443729.577	0.99	J75	208993.437	57213.963	0.99
J31	2538926.713	38444189.963	0.38	J31	209213.265	57678.281	0.38	J76	2538710.263	38443729.103	67.12	J76	208994.307	57212.484	67.12
J32	2538926.713	38444189.963	0.37	J32	209212.990	57678.545	0.37	J77	2538709.252	38443677.089	51.37	J77	209053.140	57180.189	51.37
J33	2538926.713	38444189.963	0.10	J33	209212.995	57678.919	0.10	J78	25386814.403	38443677.585	57.50	J78	209098.171	57155.469	57.50
J34	2538926.680	38444189.692	0.59	J34	209212.959	57679.012	0.59	J79	2538765.093	38443702.171	27.41	J79	209040.006	57185.291	27.41
J35	2538926.535	38444189.261	0.59	J35	209212.817	57679.582	0.59	J80	2538776.843	38443726.931	2.59	J80	209040.874	57209.993	2.59
J36	2538926.457	38444189.842	8.99	J36	209212.742	57680.163	8.99	J81	2538777.953	38443729.271	1.37	J81	209041.995	57212.328	1.37
J37	2538926.127	38444206.828	0.55	J37	209212.455	57689.150	0.55	J82	2538778.541	38443730.509	67.58	J82	209042.589	57213.563	67.58
J38	2538926.127	38444207.379	0.55	J38	209212.467	57689.701	0.55	J83	2538807.516	38443791.564	3.63	J83	209091.856	57214.476	3.63
J39	2538926.207	38444207.926	0.55	J39	209212.540	57690.247	0.55	J84	2538809.075	38443794.847	79.74	J84	209093.430	57277.751	79.74
J40	2538926.339	38444208.463	0.55	J40	209212.674	57690.784	0.55	J85	2538843.264	38443866.890	4.65	J85	209127.963	57349.626	4.65
J41	2538926.527	38444208.981	2.05	J41	209212.865	57691.301	2.05	J86	2538845.257	38443871.080	65.26	J86	209129.977	57353.815	65.26
J42	2538927.328	38444210.865	0.95	J42	209213.062	57693.181	0.95	J87	2538873.237	38443933.040	2.51	J87	209158.238	57412.035	2.51
J43	2538926.528	38444211.509	3.92	J43	209212.874	57693.689	3.92	J88	2538874.313	38443932.310	64.77	J88	209159.324	57414.096	64.77
J44	2538923.196	38444213.440	5.66	J44	209209.565	57695.776	5.66	J89	2538902.084	38443993.831	2.58	J89	209187.376	57473.279	2.58
J45	2538921.643	38444207.978	8.48	J45	209207.976	57690.341	8.48	J90	2538903.191	38443993.165	5.11	J90	209188.494	57475.607	5.11
J46	2538918.496	38444200.120	8.48	J46	209204.792	57682.485	8.48	J91	253956.58	57353.88	5.11	J91	209188.494	57475.607	5.11

注: 1. 以上2000国家平面坐标由委托方提供的电子文件提取所得, 广州2000坐标由2000国家平面坐标转广州坐标, 再由广州坐标转换所得。  
2. 本项目拟征用地界线在穗国土规划业务函〔2017〕5698号、穗规划资源业务函〔2020〕12896号、穗规划资源业务函〔2022〕7895号用地界线范围内。

广州市城市规划勘测设计研究院

绘图日期: 2022年8月2日

1:1000

绘图员: 李强富  
检查员: 熊辉