

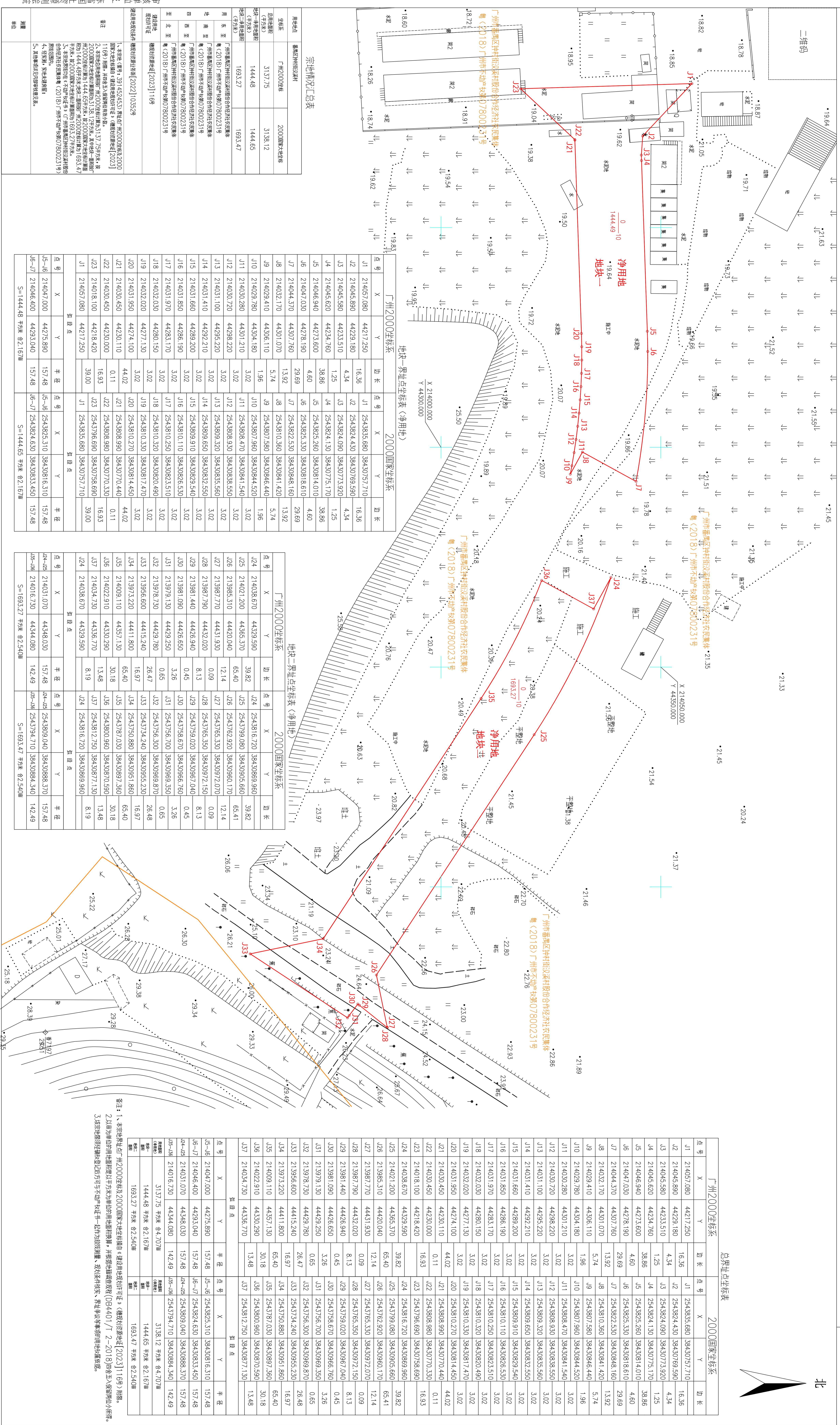
宗地图

单位: m²

坐落: 番禺区钟村街汉溪村

宗地案号: 214.00-44.00、214.00-44.25、213.80-44.25
图幅号: 214.00-44.00、214.00-44.25、213.80-44.25

2023年10月数字化制图。
广州2000坐标系。
2022年版图式。



宗地情况汇总表

用地名称	宗地编号	宗地面积
宗地名称	J1-J47	2000国家坐标系
宗地编号	3137.75	3138.12
宗地面积	1444.48	1444.65
宗地用途	1693.27	1693.47

地块一界址点坐标表(净用地)

点号	X	Y	边长	点号	X	Y	边长
J1	214057.080	44217.250	16.36	J11	2543825.680	38430757.710	16.36
J2	214045.890	44229.180	4.34	J12	2543824.090	38430769.590	4.34
J3	214045.580	44233.510	1.25	J13	2543824.090	38430773.920	1.25
J4	214045.620	44234.760	38.86	J14	2543824.130	38430773.170	38.86
J5	214046.940	44273.600	4.60	J15	2543825.330	38430814.010	4.60
J6	214047.030	44278.190	29.69	J16	2543825.330	38430818.610	29.69
J7	214044.370	44207.760	13.92	J17	2543822.530	38430848.160	13.92
J8	214042.170	44301.070	5.74	J18	2543807.580	38430844.520	5.74
J9	214029.780	44304.180	1.96	J19	2543807.960	38430844.520	1.96
J10	214030.280	44301.210	3.02	J20	2543808.470	38430844.520	3.02
J11	214030.720	44298.220	3.02	J21	2543809.320	38430835.550	3.02
J12	214031.100	44292.210	3.02	J22	2543809.650	38430835.550	3.02
J13	214031.410	44292.210	3.02	J23	2543809.910	38430825.540	3.02
J14	214031.660	44289.200	3.02	J24	2543810.110	38430825.540	3.02
J15	214031.660	44286.190	3.02	J25	2543810.110	38430825.540	3.02
J16	214031.680	44286.190	3.02	J26	2543810.290	38430825.540	3.02
J17	214031.970	44280.150	3.02	J27	2543810.290	38430825.540	3.02
J18	214032.030	44281.170	3.02	J28	2543810.290	38430825.540	3.02
J19	214032.030	44277.130	44.02	J29	2543810.290	38430825.540	44.02
J20	214030.020	44230.110	0.11	J30	2543808.990	38430770.540	0.11
J21	214030.450	44230.000	16.93	J31	2543796.690	38430758.690	16.93
J22	214018.100	44218.420	39.00	J32	2543796.690	38430758.690	39.00
J23	214018.100	44217.250		J33	2543796.690	38430758.690	
J24	214057.080	44217.250		J34	2543796.690	38430758.690	
J25	214047.000	44275.890	157.48	J35	2543825.630	38430818.610	157.48
J26	214046.400	44233.040	157.48	J36	2543825.630	38430818.610	157.48
J27	214046.400	44233.040	157.48	J37	2543825.630	38430818.610	157.48
J28	214046.400	44233.040	157.48	J38	2543825.630	38430818.610	157.48
J29	214046.400	44233.040	157.48	J39	2543825.630	38430818.610	157.48
J30	214046.400	44233.040	157.48	J40	2543825.630	38430818.610	157.48
J31	214046.400	44233.040	157.48	J41	2543825.630	38430818.610	157.48
J32	214046.400	44233.040	157.48	J42	2543825.630	38430818.610	157.48
J33	214046.400	44233.040	157.48	J43	2543825.630	38430818.610	157.48
J34	214046.400	44233.040	157.48	J44	2543825.630	38430818.610	157.48
J35	214046.400	44233.040	157.48	J45	2543825.630	38430818.610	157.48
J36	214046.400	44233.040	157.48	J46	2543825.630	38430818.610	157.48
J37	214046.400	44233.040	157.48	J47	2543825.630	38430818.610	157.48

地块二界址点坐标表(净用地)

点号	X	Y	边长	点号	X	Y	边长
J48	214038.670	44329.580	39.82	J58	2543796.690	38430888.370	39.82
J49	214021.200	44365.370	65.40	J59	2543796.690	38430888.370	65.40
J50	213987.770	44431.930	12.14	J60	2543796.690	38430888.370	12.14
J51	213987.770	44432.020	0.09	J61	2543796.690	38430888.370	0.09
J52	213987.770	44432.020	0.09	J62	2543796.690	38430888.370	0.09
J53	213987.770	44432.020	0.09	J63	2543796.690	38430888.370	0.09
J54	213987.770	44432.020	0.09	J64	2543796.690	38430888.370	0.09
J55	213987.770	44432.020	0.09	J65	2543796.690	38430888.370	0.09
J56	213987.770	44432.020	0.09	J66	2543796.690	38430888.370	0.09
J57	213987.770	44432.020	0.09	J67	2543796.690	38430888.370	0.09
J58	213987.770	44432.020	0.09	J68	2543796.690	38430888.370	0.09
J59	213987.770	44432.020	0.09	J69	2543796.690	38430888.370	0.09
J60	213987.770	44432.020	0.09	J70	2543796.690	38430888.370	0.09
J61	213987.770	44432.020	0.09	J71	2543796.690	38430888.370	0.09
J62	213987.770	44432.020	0.09	J72	2543796.690	38430888.370	0.09
J63	213987.770	44432.020	0.09	J73	2543796.690	38430888.370	0.09
J64	213987.770	44432.020	0.09	J74	2543796.690	38430888.370	0.09
J65	213987.770	44432.020	0.09	J75	2543796.690	38430888.370	0.09
J66	213987.770	44432.020	0.09	J76	2543796.690	38430888.370	0.09
J67	213987.770	44432.020	0.09	J77	2543796.690	38430888.370	0.09
J68	213987.770	44432.020	0.09	J78	2543796.690	38430888.370	0.09
J69	213987.770	44432.020	0.09	J79	2543796.690	38430888.370	0.09
J70	213987.770	44432.020	0.09	J80	2543796.690	38430888.370	0.09

广州2000坐标系

点号	X	Y	边长	点号	X	Y	边长
J81	214031.070	44348.030	157.48	J91	2543808.960	38430984.520	157.48
J82	214031.070	44348.030	157.48	J92	2543808.960	38430984.520	157.48
J83	214031.070	44348.030	157.48	J93	2543808.960	38430984.520	157.48
J84	214031.070	44348.030	157.48	J94	2543808.960	38430984.520	157.48
J85	214031.070	44348.030	157.48	J95	2543808.960	38430984.520	157.48
J86	214031.070	44348.030	157.48	J96	2543808.960	38430984.520	157.48
J87	214031.070	44348.030	157.48	J97	2543808.960	38430984.520	157.48
J88	214031.070	44348.030	157.48	J98	2543808.960	38430984.520	157.48
J89	214031.070	44348.030	157.48	J99	2543808.960	38430984.520	157.48
J90	214031.070	44348.030	157.48	J100	2543808.960	38430984.520	157.48

2000国家坐标系

点号	X	Y	边长	点号	X	Y	边长
J101	2543808.960	38430984.520	157.48	J111	2543808.960	38430984.520	157.48
J102	2543808.960	38430984.520	157.48	J112	2543808.960	38430984.520	157.48
J103	2543808.960	38430984.520	157.48	J113	2543808.960	38430984.520	157.48
J104	2543808.960	38430984.520	157.48	J114	2543808.960	38430984.520	157.48
J105	2543808.960	38430984.520	157.48	J115	2543808.960	38430984.520	157.48
J106	2543808.960	38430984.520	157.48	J116	2543808.960	38430984.520	157.48
J107	2543808.960	38430984.520	157.48	J117	2543808.960	38430984.520	157.48
J108	2543808.960	38430984.520	157.48	J118	2543808.960	38430984.520	157.48
J109	2543808.960	38430984.520	157.48	J119	2543808.960	38430984.520	157.48
J110	2543808.960	38430984.520	157.48	J120	2543808.960	38430984.520	157.48

宗地界址点坐标表

点号	X	Y	边长	点号	X	Y	边长
J1	214057.080	44217.250	16.36	J11	2543835.680	38430757.710	16.36
J2	214045.890	44229.180	4.34	J12	2543824.090	38430773.920	4.34
J3	214045.580	44233.510	1.25	J13	2543824.090	38430773.920	1.25
J4	214045.620	44234.760	38.86	J14	2543824.130	38430773.170	38.86
J5	214046.940	44273.600	4.60	J15	2543825.330	38430814.010	4.60
J6	214047.030	44278.190	29.69	J16	2543825.330	38430818.610	29.69
J7	214044.370	44207.760	13.92	J17	2543822.530	38430848.160	13.92
J8	214042.170	44301.070	5.74	J18	2543807.580	38430844.520	5.74
J9	214029.780	44304.180	1.96	J19	2543807.960	38430844.520	1.96
J10	214030.280	44301.210	3.02	J20	2543808.470	38430844.520	3.02
J11	214030.720	44298.220	3.02	J21	2543809.320	38430835.550	3.02
J12	214031.100	44292.210	3.02	J22	2543809.650	38430835.550	3.02
J13	214031.410	44292.210	3.02	J23	2543809.910	38430825.540	3.02
J14	214031.660	44289.200	3.02	J24	2543810.110	38430825.540	3.02
J15	214031.660	44286.190	3.02	J25	2543810.110	38430825.540	3.02
J16	214031.680	44286.190	3.02	J26	2543810.290	38430825.540	3.02
J17	214031.970	44280.150	3.02	J27	2543810.290	38430825.540	3.02
J18	214032.030	44281.170	3.02	J28	2543810.290	38430825.540	3.02
J19	214032.030	44277.130	44.02	J29	2543810.290	38430825.540	44.02
J20	214030.020	44230.110	0.11	J30	2543808.990	38430770.540	0.11
J21	214030.450	44230.000	16.93	J31	2543796.690	38430758.690	16.93
J22	214018.100	44218.420	39.00	J32	2543796.690	38430758.690	39.00
J23	214057.080	44217.250		J33	2543796.690	38430758.690	
J24	214047.000	44275.890	157.48	J34	2543796.690	38430758.690	157.48
J25	214046.400	44233.040	157.48	J35	2543796.690	38430758.690	157.48
J26	214046.400	44233.040	157.48	J36	2543796.690	38430758.690	157.48
J27	214046.400	44233.040	157.48	J37	2543796.690	38430758.690	157.48
J28	214046.400	44233.040	157.48	J38	2543796.690	38430758.690	157.48
J							