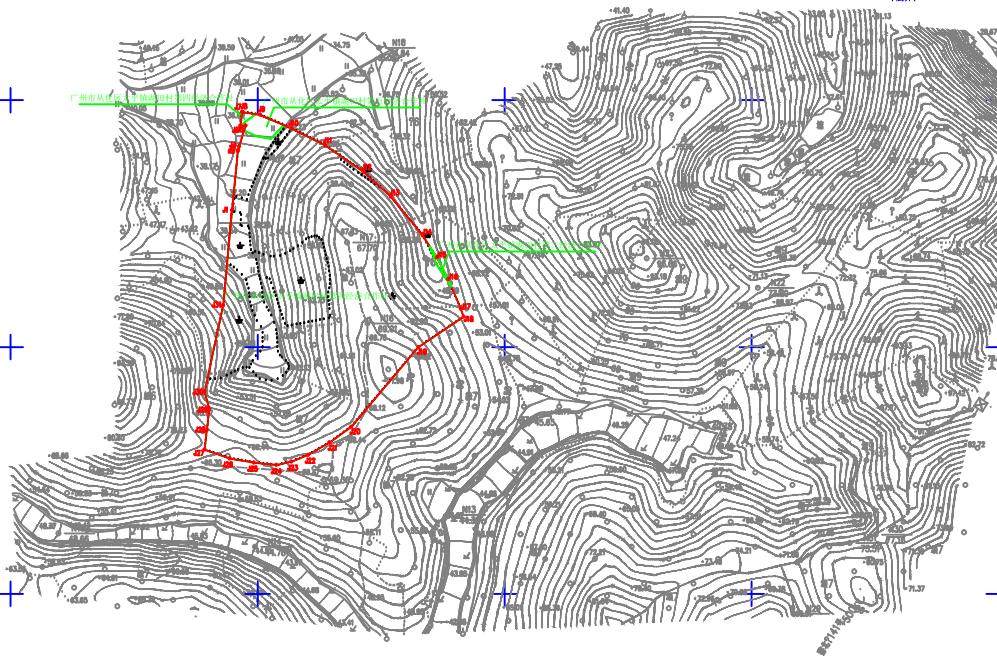


图例
 点号? 1
 地号代? 203
 界址点? ○
 界址点号? J1
 地号? *
 权属? —



界址点表?表

点号	X	Y	? ? ?
J1	2595310.833	450079.233	47.95
J2	2595358.537	450084.072	1.17
J3	2595359.687	450084.299	2.94
J4	2595362.500	450085.155	17.55
J5	2595379.292	450090.260	4.08
J6	2595379.292	450086.178	11.28
J7	2595390.516	450087.316	1.00
J8	2595390.277	450088.285	14.02
J9	2595388.034	450102.123	27.73
J10	2595377.017	450127.574	30.54
J11	2595363.277	450154.846	37.50
J12	2595341.957	450185.702	30.04
J13	2595321.705	450207.890	40.64
J14	2595290.350	450233.744	21.27
J15	2595272.420	450245.181	19.80
J16	2595254.889	450254.342	25.92
J17	2595231.011	450264.477	6.96
J18	2595224.414	450266.704	43.90
J19	2595200.000	450230.220	84.53
J20	2595135.350	450175.760	21.68
J21	2595122.560	450158.250	20.21
J22	2595112.460	450140.740	14.51
J23	2595107.070	450127.270	12.41
J24	2595104.390	450115.150	18.29
J25	2595106.400	450096.970	19.82
J26	2595109.760	450077.440	21.61
J27	2595116.883	450057.035	15.72
J28	2595132.500	450058.648	17.29
J29	2595149.676	450060.842	14.55
J30	2595163.736	450057.098	71.51
J31	2595233.680	450072.074	77.50
J1	2595310.833	450079.233	

红线范围内面积为: 37701.94平方米;
 其中: 广州市从化区太平镇南田村第四经济合作社集体土地面积为: 37230.10平方米;
 广州市从化区太平镇南田村第五经济合作社集体土地面积为: 404.10平方米;
 广州市从化区太平镇南田村第三经济合作社集体土地面积为: 89.70平方米;