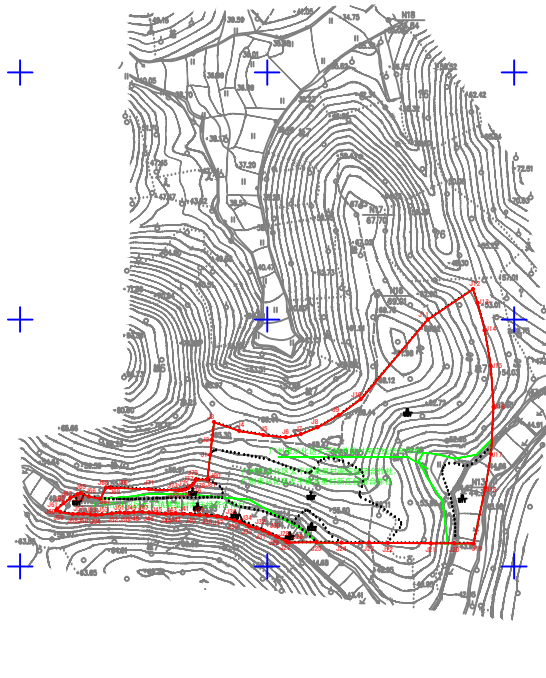


图例
 1
 203
 名称??
 区域??
 界址点符号
 界址点号 J1
 地号??
 房屋??
 房屋名称 绿色



红线内土地面积为30238.90平方米;

其中: 广州市白云区太平镇某村南庄经济合作社、从化区太平镇某村南庄经济合作社集体土地面积为24408.20平方米;

广州市白云区太平镇某村南庄经济合作社集体土地面积为5830.70平方米;

界址点坐?表

编号	X	Y	???
J39	2595041.426	450045.360	6.97
J40	2595042.119	450038.427	6.44
J41	2595042.635	450032.010	5.85
J42	2595042.700	450028.160	3.45
J43	2595042.571	450022.716	4.68
J44	2595042.441	450018.036	6.96
J45	2595042.765	450011.081	6.60
J46	2595043.480	450004.517	5.48
J47	2595043.935	449999.057	7.08
J48	2595043.870	449991.972	4.45
J49	2595043.350	449987.552	2.93
J50	2595043.155	449984.827	3.73
J51	2595043.610	449980.923	6.55
J52	2595042.830	449974.423	8.05
J53	2595041.920	449966.428	5.22
J54	2595041.466	449961.229	4.01
J55	2595042.051	449957.264	6.00
J56	2595042.506	449951.284	4.03
J57	2595042.571	449947.254	4.42
J58	2595042.314	449942.838	10.29
J59	2595043.993	449932.689	3.84
J60	2595045.462	449928.132	1.50
J61	2595046.584	449930.117	6.81
J62	2595051.158	449935.166	6.81
J63	2595055.103	449940.721	6.81
J64	2595058.363	449946.703	2.59
J65	2595059.325	449948.109	7.18
J66	2595056.520	449955.720	9.44
J67	2595054.770	449965.000	10.14
J68	2595063.715	449968.782	3.38
J69	2595063.799	449973.164	0.52
J70	2595063.779	449973.679	30.84
J71	2595082.439	450004.488	23.93
J72	2595061.399	450028.397	2.70
J73	2595061.622	450031.092	2.62
J74	2595062.286	450033.621	2.61
J75	2595063.380	450035.996	2.61
J76	2595064.869	450038.145	2.86
J77	2595066.883	450040.179	3.14
J78	2595069.443	450041.990	1.18
J79	2595070.512	450042.495	9.12
J80	2595070.171	450051.612	0.45
J81	2595070.621	450051.665	19.74
J82	2595080.226	450053.940	

界址点坐?表

编号	X	Y	???
J1	2595090.226	450053.940	12.36
J2	2595102.500	450055.365	14.48
J3	2595116.883	450057.035	21.61
J4	2595109.760	450077.440	18.82
J5	2595106.400	450096.970	18.29
J6	2595104.380	450115.150	12.41
J7	2595107.070	450127.270	14.51
J8	2595112.460	450140.740	20.21
J9	2595122.560	450158.280	21.68
J10	2595135.350	450175.760	84.53
J11	2595200.000	450230.220	43.90
J12	2595224.414	450266.704	11.61
J13	2595213.417	450270.417	23.03
J14	2595191.137	450276.255	29.16
J15	2595162.396	450281.166	33.30
J16	2595129.171	450283.333	38.23
J17	2595090.993	450281.263	27.85
J18	2595063.532	450276.653	46.05
J19	2595018.500	450267.019	15.60
J20	2595018.610	450251.416	18.92
J21	2595018.744	450232.500	34.66
J22	2595018.989	450197.844	15.34
J23	2595019.097	450182.500	22.36
J24	2595019.255	450160.142	20.21
J25	2595019.398	450139.928	22.40
J26	2595019.557	450117.531	1.15
J27	2595019.565	450116.383	1.49
J28	2595020.396	450115.152	8.37
J29	2595024.093	450107.641	6.52
J30	2595026.635	450101.632	5.27
J31	2595028.946	450096.895	5.67
J32	2595030.911	450091.580	6.51
J33	2595032.760	450086.340	7.97
J34	2595035.995	450078.060	4.60
J35	2595037.382	450073.669	7.40
J36	2595039.230	450066.505	6.93
J37	2595040.501	450059.688	8.12
J38	2595041.195	450051.600	6.24
J39	2595041.426	450045.360	

S=30238.9 平方米 0.4535847